

# Automatic Cover Installations Made Easy

By  
Joe Nannetti  
Poolsaver Inc

---

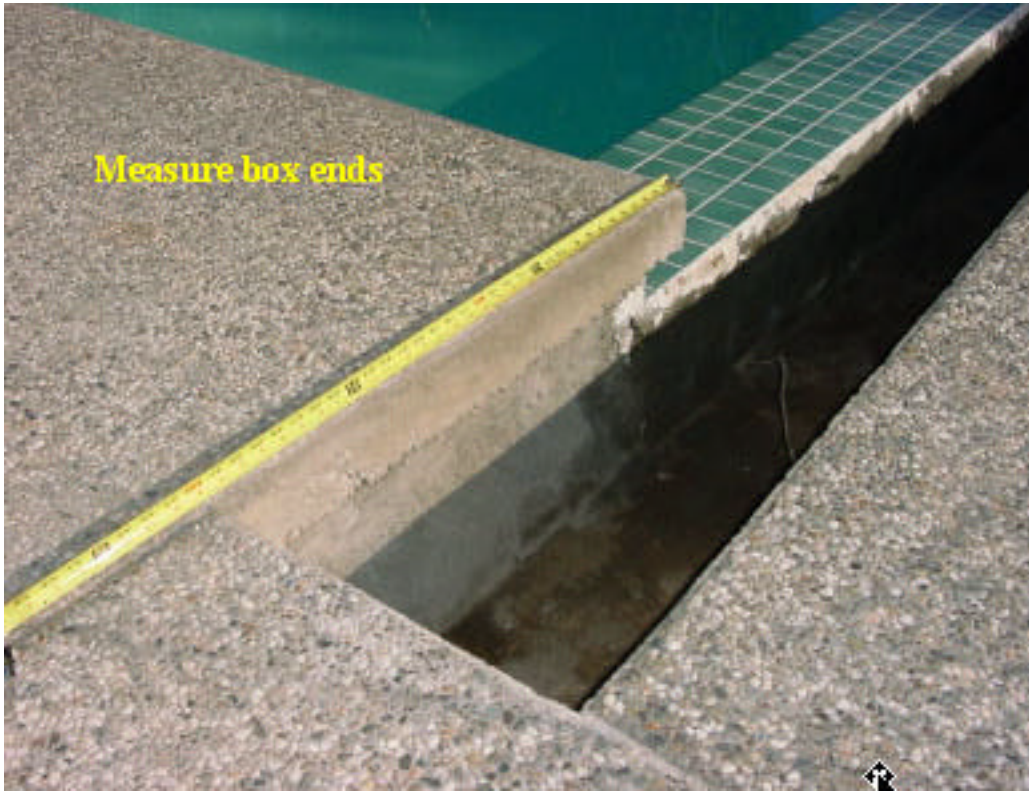
## Pre-sites

- A correct pre-site can make the difference between a good installation and the nightmare install.

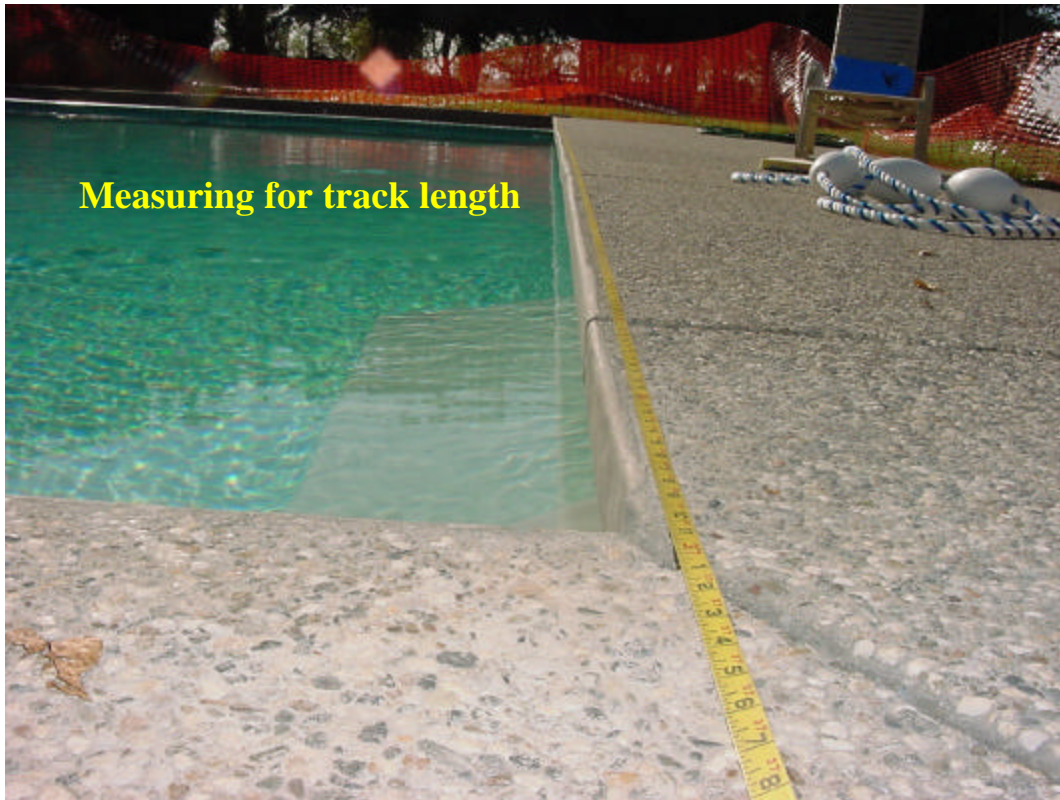




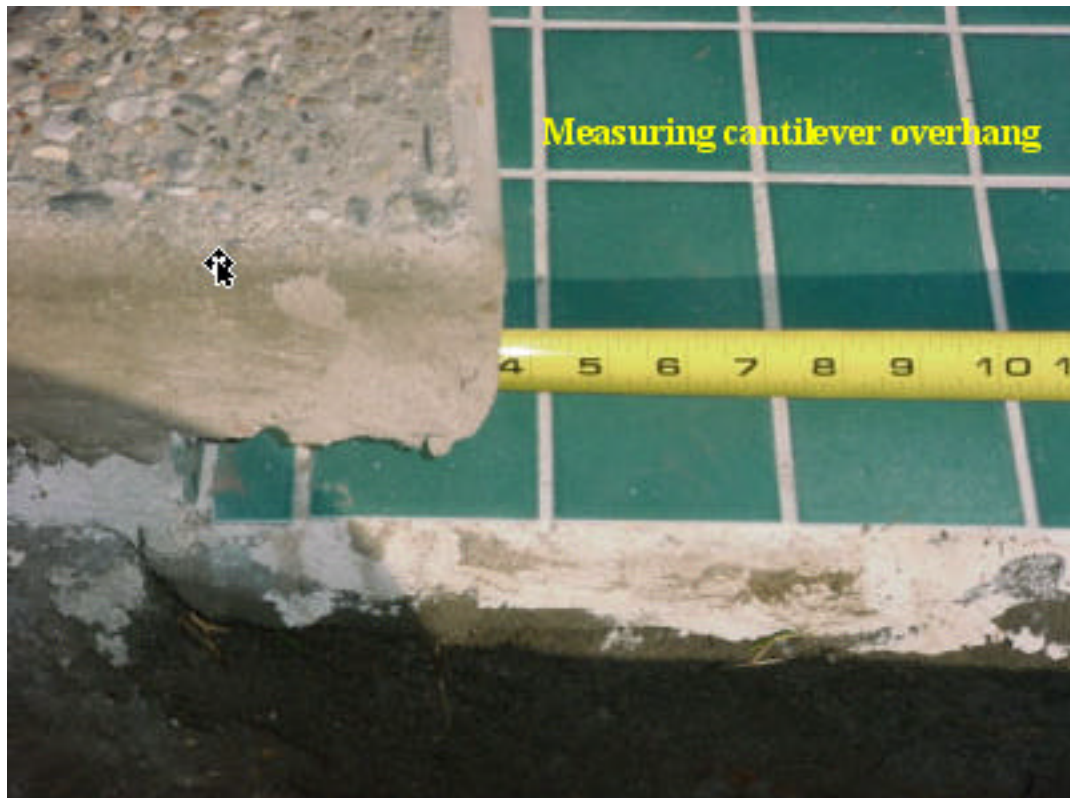




Measure box ends



Measuring for track length







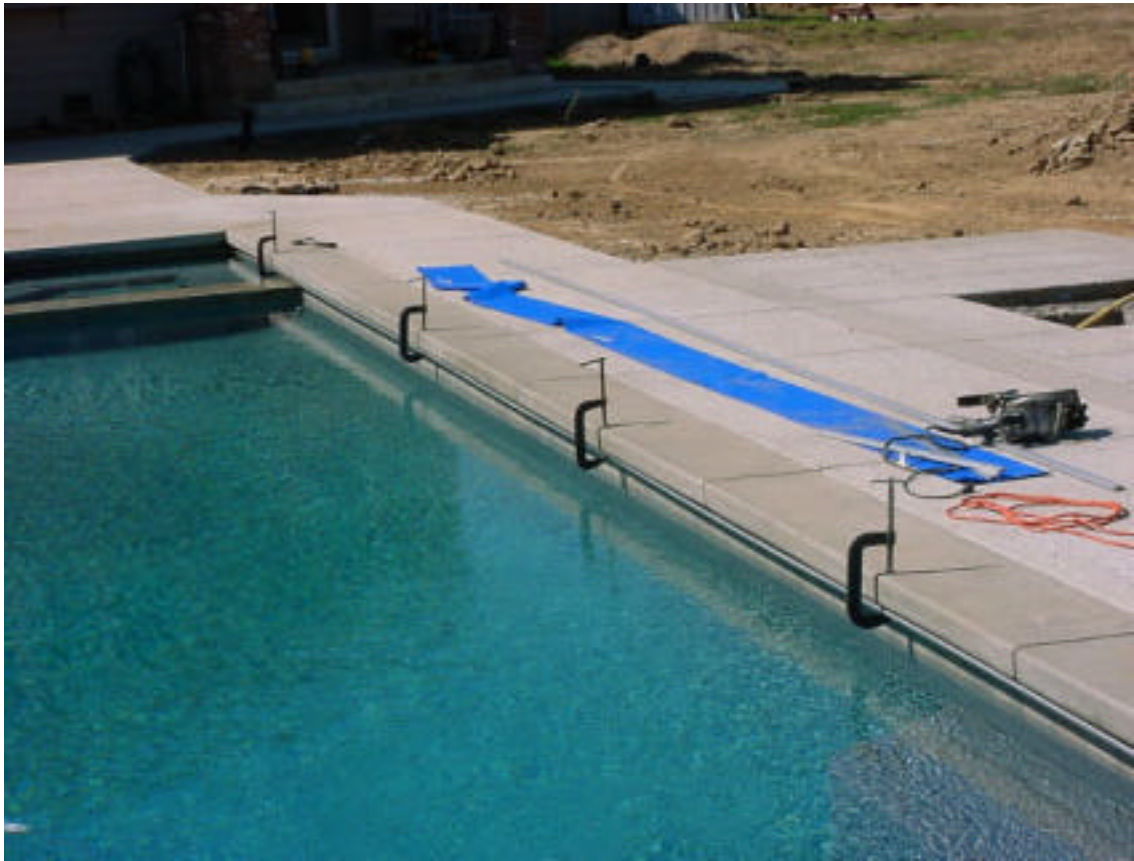
**Identify electrical supply and drainage**

## Installing the tracks

- Measuring & cutting tracks
- Setting up tracks to be installed
- Drill Cantilever for tracks
- Inserting anchors and screws





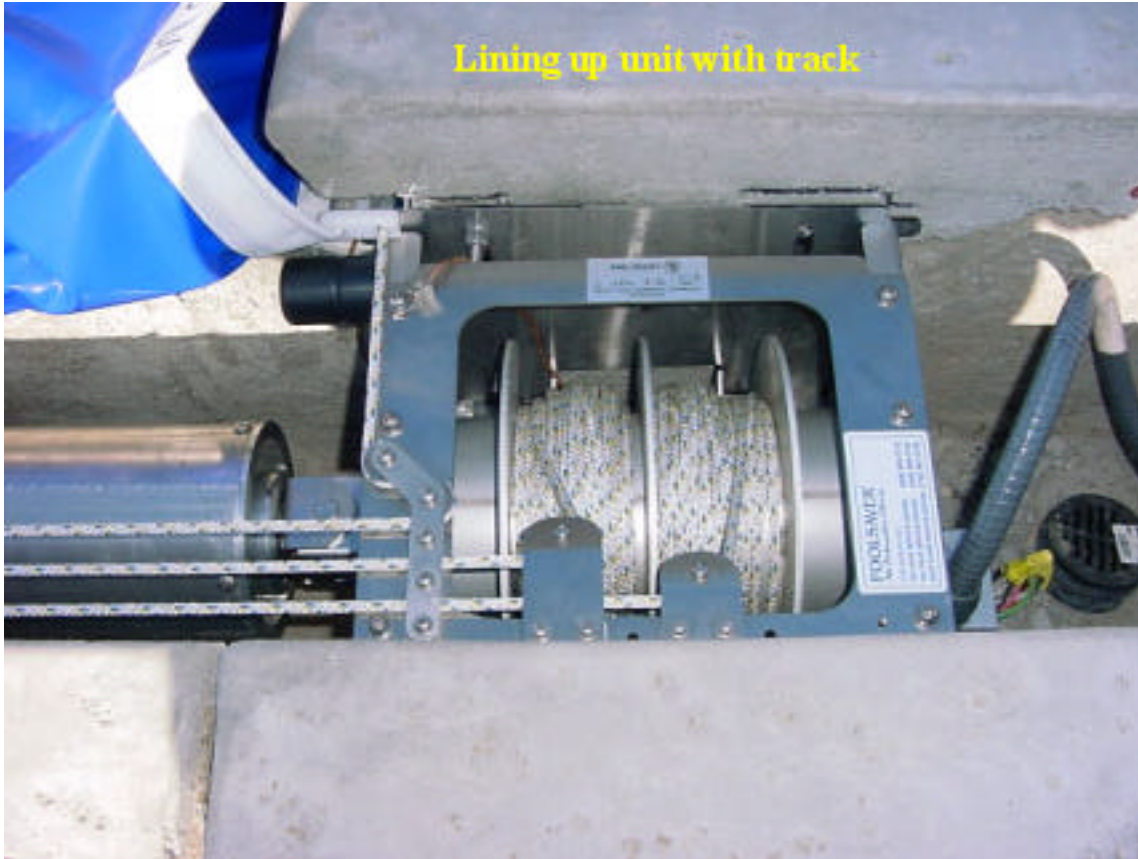






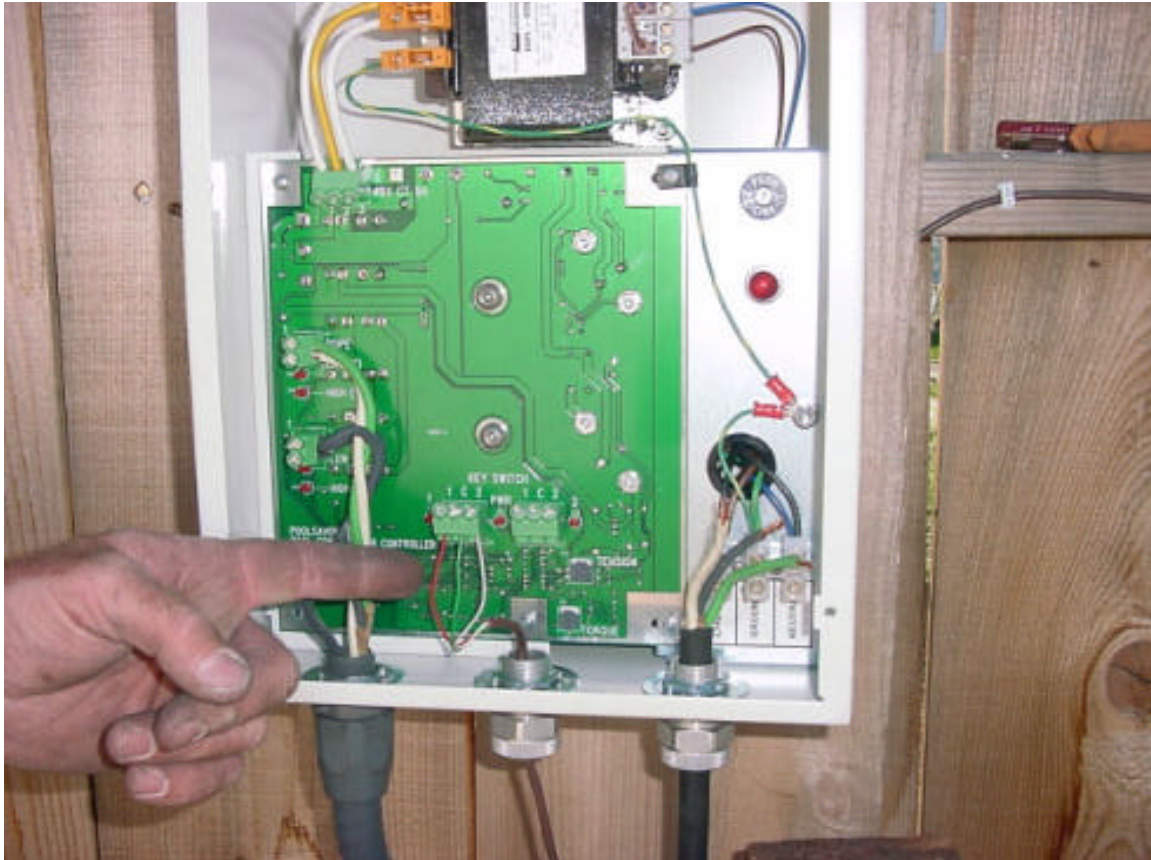
## Installing Mechanism

- Aligning unit in box
- Leveling unit
- Anchoring unit



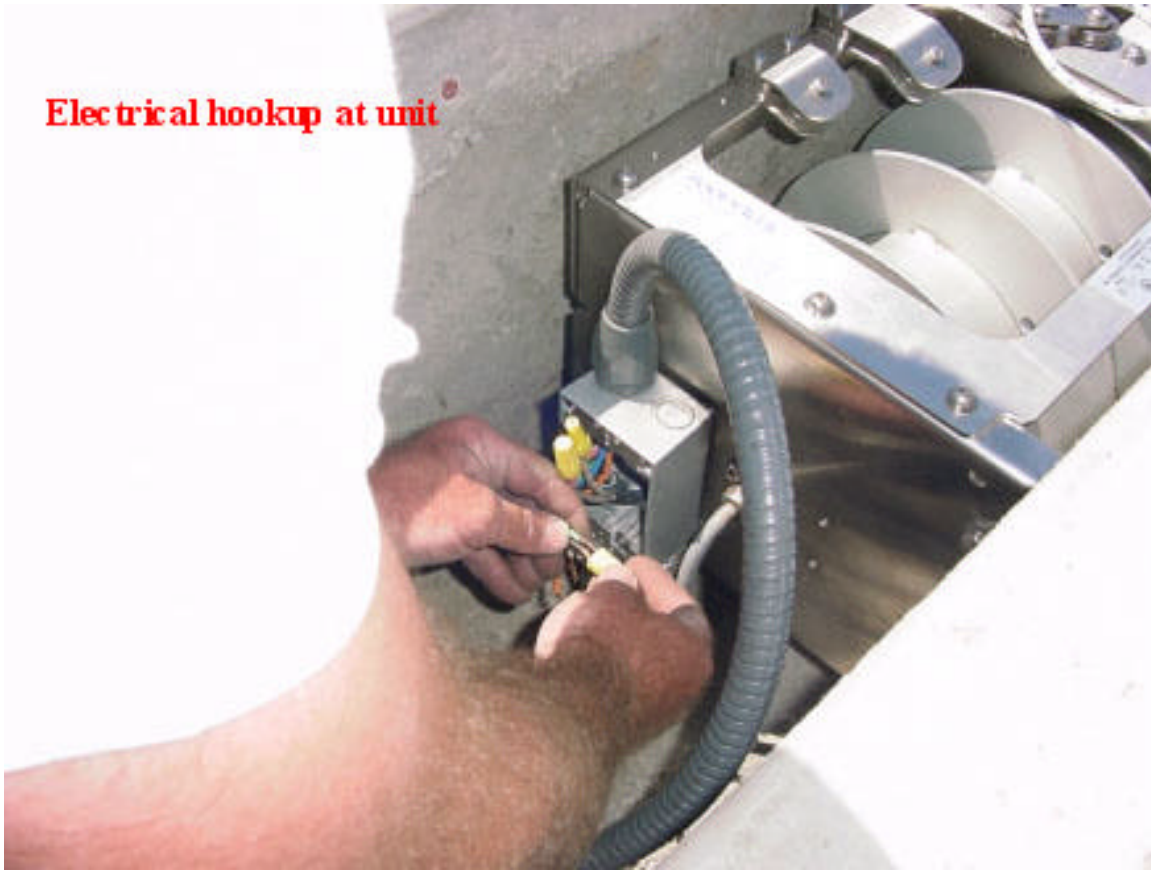
## Electrical Hook-up

- Wiring to power supply
- Installing automatic stops





**Electrical hookup at unit**



## Installing The Cover

- Rolling out the cover
- Running the ropes
- Installing the leading edge bar,  
■ wheelless adaptations & magnets
- Trimming the ropes
- Pinning the cover to the roller
- When rolling the cover out you should always start at the left hand side of the pool (looking at the pool from behind the unit) and roll the cover out behind the system.
- Untie the ropes and make sure there are no tangles.





# Installing Lid & Brackets

- Mounting lid brackets
- Mounting the lid

